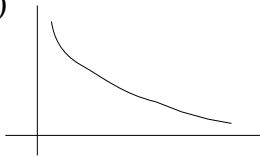
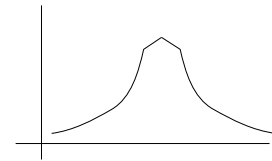


Hints assignment 1

1. ...
2. a) ...
b)



...



c)

$$\lambda = (2 * 6234) / 1845 = 6.7577$$

$$P(3) = 0.059$$

$$P(1 \leq k \leq 6) = P(1) + P(2) + P(3) + P(4) + P(5) + P(6) = 0.484$$

3. Depending on the explanation, different answers are possible:
Evolutionary tree: hierarchic
Global banking system: scale free
WWW: scale free
German road system: scale free